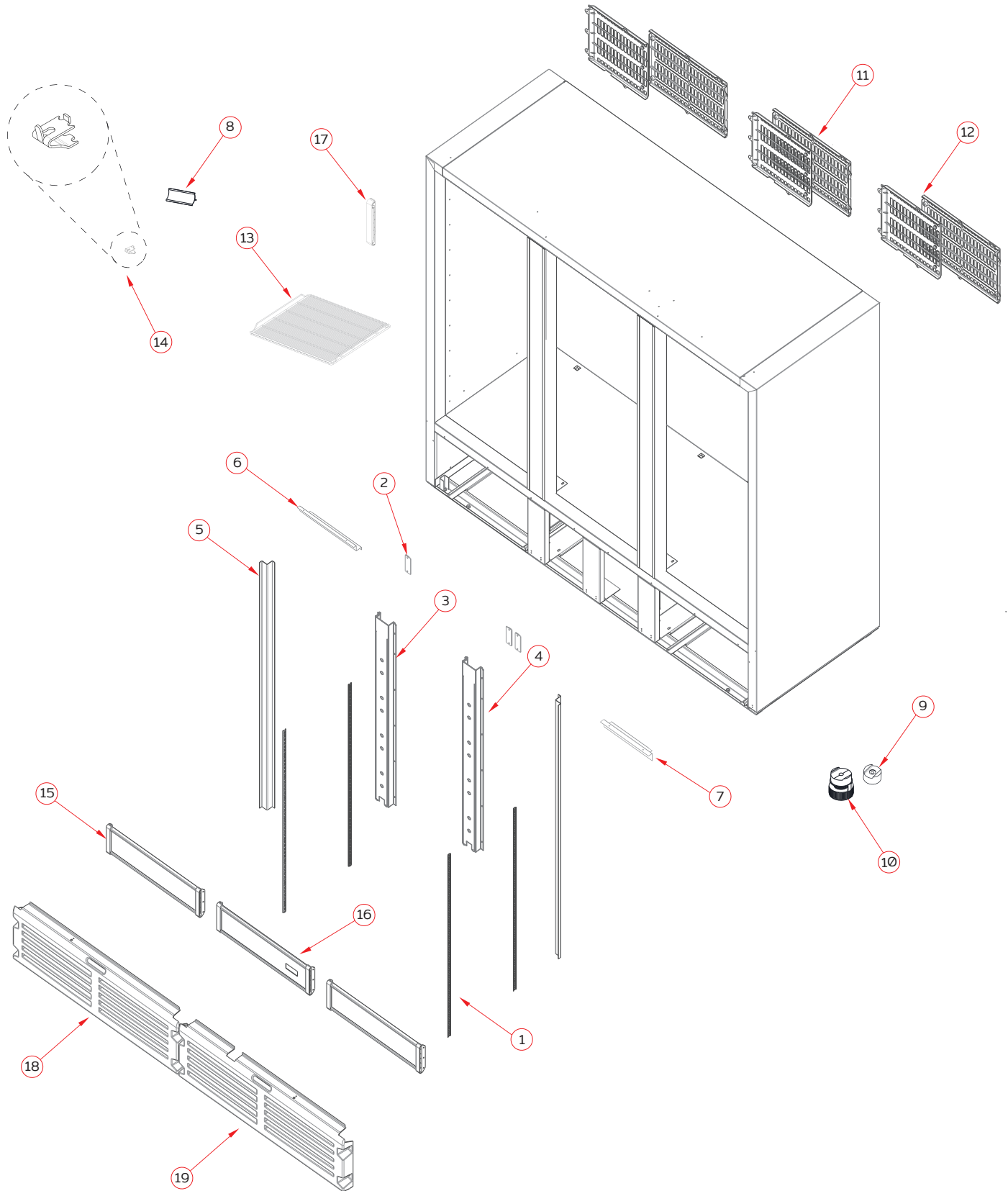




ENSAMBLE GENERAL
Explosionado Modelo G372
REV 01/18



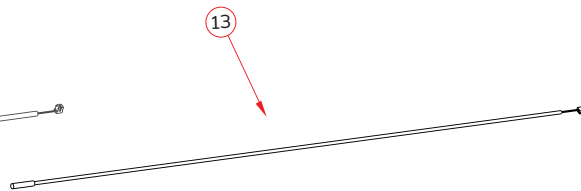
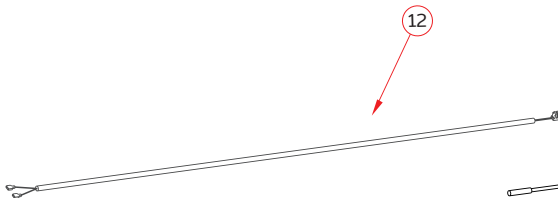
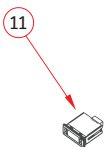
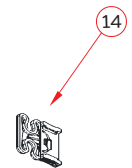
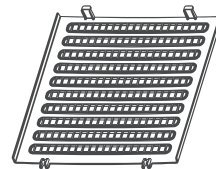
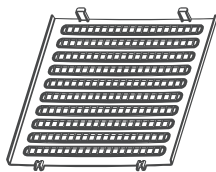
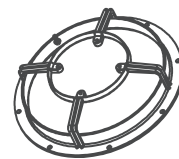
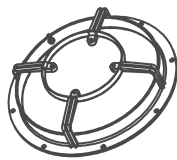
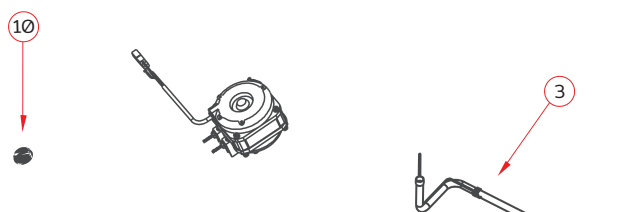
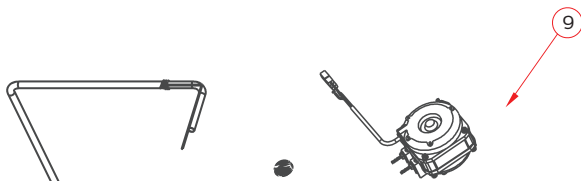
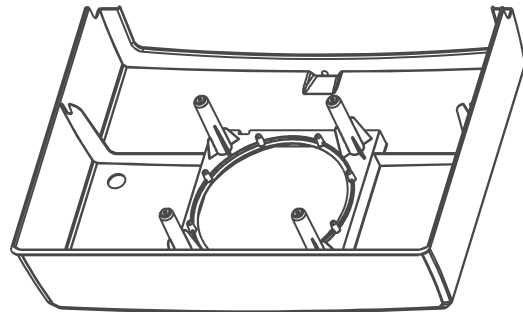
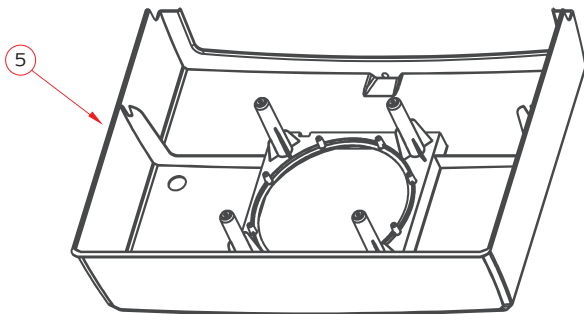
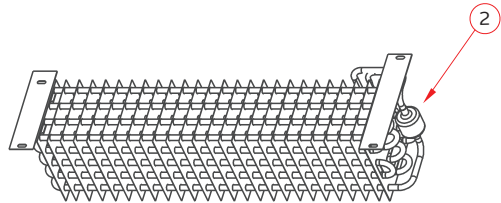
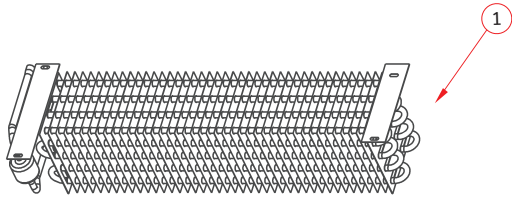


ENSAMBLE GENERAL
Explosionado Modelo G372
REV 00/18

No.	Descripción	Código
1	Cremallera 1305 9B	3000774
2	Moldura contra vacío p/poste NEG	3022346
3	SE Ducto G372 IZQ	2062461
4	SE Ducto G372 DER	2062462
5	Moldura cubretubos BLA 1.500M	2022907
6	Complemento Met. cubretubos BLA G372 DER	2022900
7	Complemento Met. cubretubos BLA G372 IZQ	2022901
8	Moldura deflector BLA Ø.488 M	2000028
9	Patín PE Riel Base G3 CO2	3039965
10	Tacon nivelador PE 75.5MM CO2	3039966
11	Rejilla PP Trasera CEN NEG	2050952
12	Rejilla PP Trasera LAT NEG	2050954
13	Parrilla G372 2TP	3023756
14	Clip P/Cremallera C16	3000671
15	Moldura Panel BLA Ø.548 M	2034800
16	Moldura Panel BLA Ø.548 M ERC	2074736
17	Soporte PP Panel LAT BLA	3035267
18	Louver Ter NEG G372 IZQ IM RAN	2069562
19	Louver TER NEG G372 DER IM RAN	2069912



UNIDAD EVAPORADORA
Explosionado Modelo G372
REV 00/18



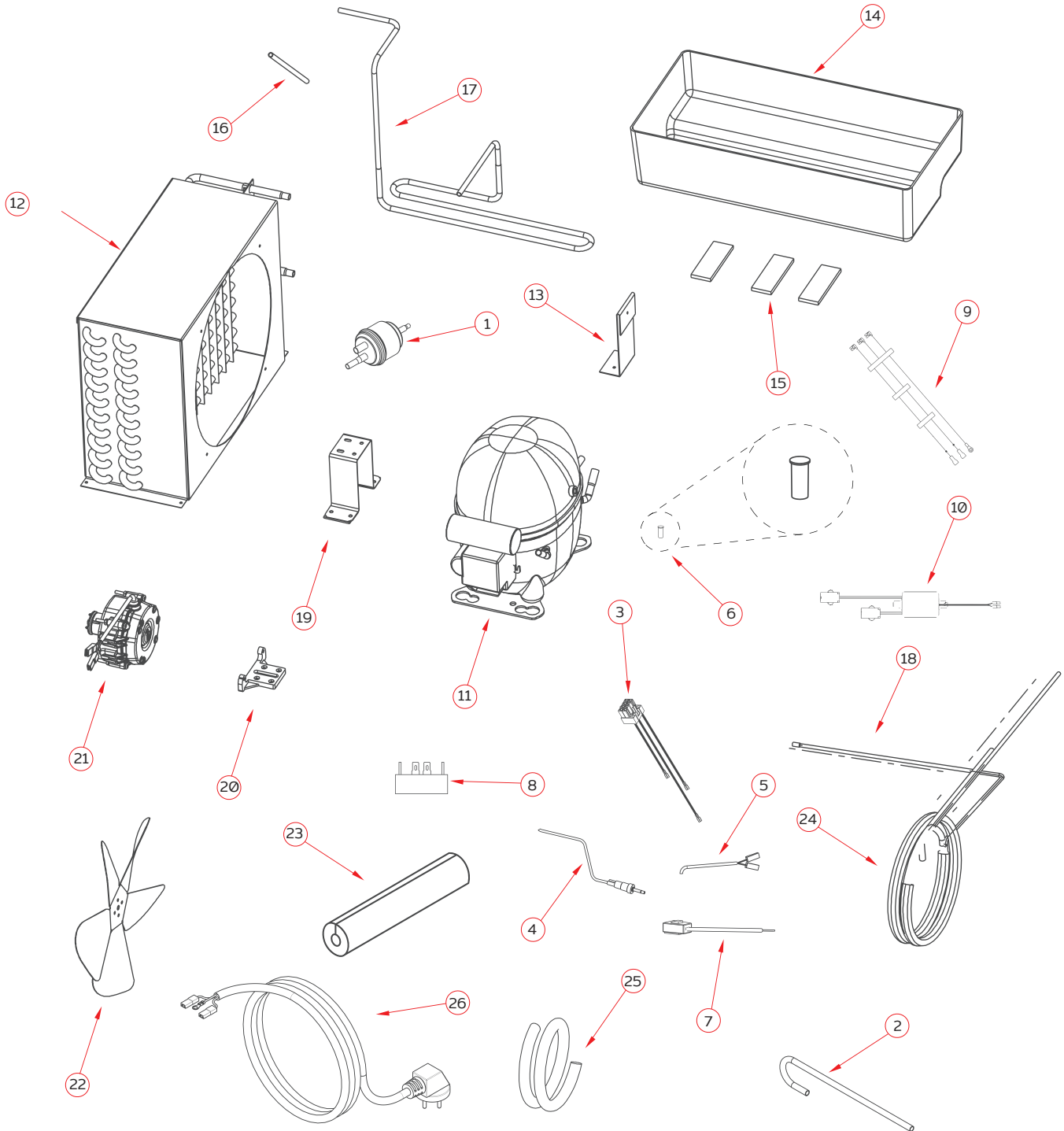


UNIDAD EVAPORADORA
Explosionado Modelo G372
REV 00/18

No.	Descripción	Código
1	Evap 120 20T 5/16 AL 5APP IZQ PIN	3040335
2	Evap 20T 5/16 AL 5APP PIN	3033365
3	Tubo retorno 3/8" 2.230M C/Cap G3T72	2028288
4	Tubo retorno 3/8" 2.190M C/Cap IZQ G372	2027542
5	Tolva ABS G3 s/ran BLA UL	2063294
6	Rejilla ABS aspa UL	2044821
7	Aspa ELC PLA 08" 34°	3037464
8	Aro NYL Motor	3000334
9	Motor E ELC 16W 115V 50/60Hz 1850RPM-EX	3023792
10	Tapón Tolva de 1"	3017727
11	Control ERC112D CER115/220V s/sensor	3049464
12	Sensor interrup ERC112 C/ETIQ	3051546
13	Sensor Temp 1M ERC 112D C/ETIQ	3055829
14	Clip p/control negro ERC 112D	3049430



UNIDAD CONDENSADORA
Explosionado Modelo G372
REV 00/18



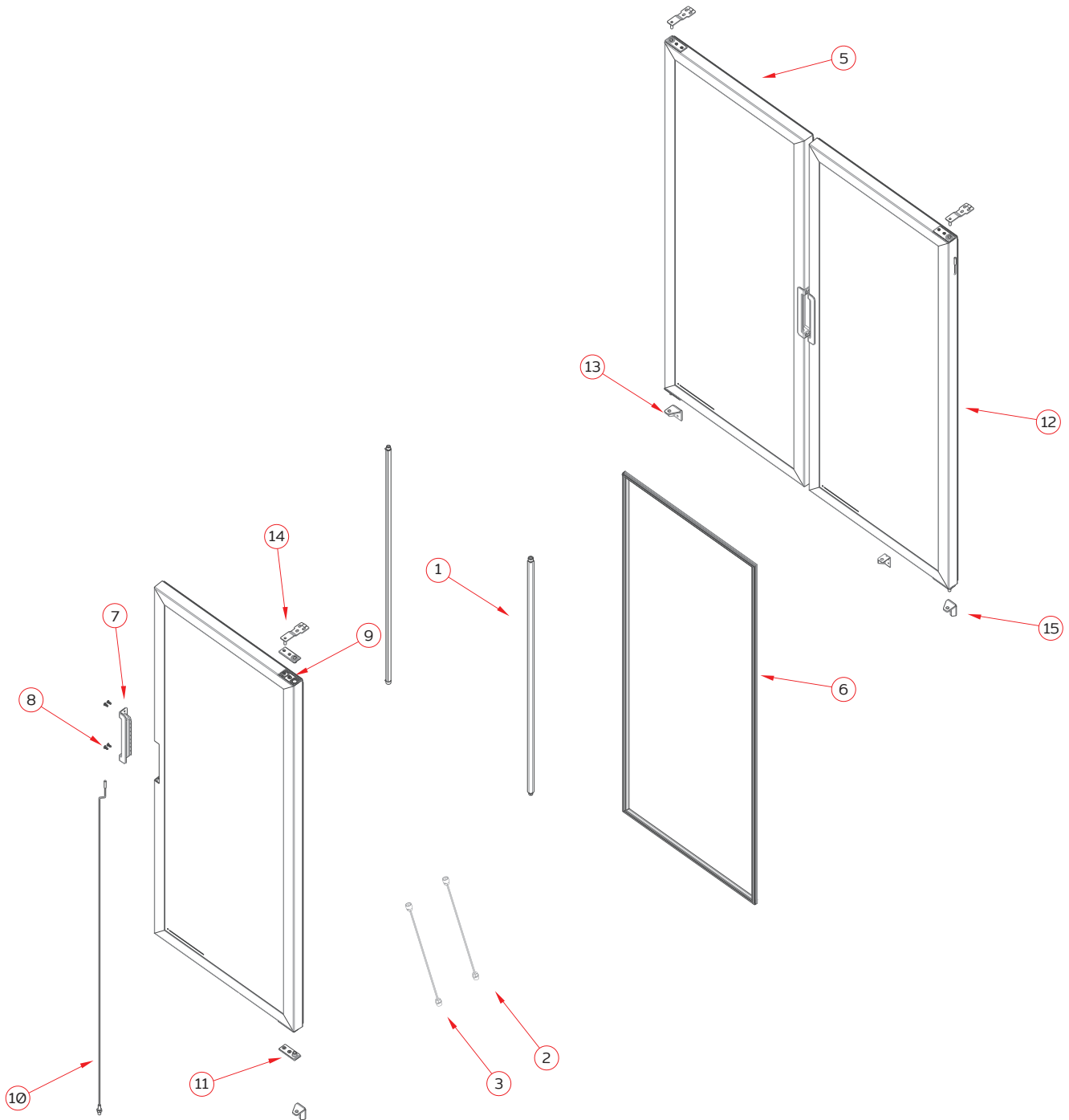


UNIDAD CONDENSADORA
Explosionado Modelo G372
REV 00/18

No.	Descripción	Código
1	Filtro deshidratador Ø.9Hz DCL	3043930
2	Tubo prevació 1/4" Ø.300M VR06	2030264
3	Arnes maestro G326 ERC112D LED	3055830
4	Arnes motor G342 *72	3017444
5	Arnes complem maestro TVC 72 ERC112DLEDUL	3057106
6	Interruptor magnético 1 Polo 1 Tiro C/TE	3030429
7	Arnes complem unidad TVC72 UL	3057881
8	Temporizador TGC 115V 10A 50/60Hz C/CON	3057883
9	Arnes unidad CIR UL	3042236
10	Adaptador VB-12 30W 115V 50/60 Hz C/CON	3044404
11	Compresor EMB NEU6214Z 115V 60Hz	3042608
12	Cond 57Ø ALE 40T 3/8 AL 5APP LA334 PIN	2045763
13	Soporte MET L Charola GDE BAR	2066813
14	Charola ABS Condenser 6L	2010600
15	Empaque PVC Marco 28.5MM	3039351
16	Tubo Carga 1/4" Ø.180M VR12	2014639
17	Tubo descarga 1/4" 1.400M G372 2D	2046183
18	Intercambiador de calor CU TVC 72 DER	2074842
19	Base motor cond 84MM	3033267
20	Soporte NTL T Motor INF FV	3039514
21	Motor E WEL 1/40Hp 115V50/60Hz1550RPMEX	3030494
22	Aspa PLA Ø10"28°	3031820
23	Cubre tubos 72"	3000807
24	Manguera PVC 1/2" BLA	3001110
25	Manguera PVC 3/8" BLA	3001111
26	SE Arnes Tomacorriente 115V 13A C16 MX	2059150



UNIDAD CONDESADORA
Explosionado Modelo G372
REV 00/18





PUERTAS

Explosionado Modelo G372

REV 00/18

No.	Descripción	Código
1	Módulo 28LEDS 4W 12V	3045408
2	Arnes H-M Moduled Ø.900M	3050461
3	Arnes H-M Moduled	3027227
4	Arnes H-Driver VRD43 PD	3035611
5	Pta V C IZQ V14 G372 LED ABT MG	2074269
6	Empaque magnético universal 616x1577MM	3038234
7	Jaladera PLA NEG V14 V17	3055404
8	Remache desmont 3/8" NEG	3027788
9	Soporte NYL buje PTA V14	3046334
10	Autocierre barra torsión 1.570M V14	3057810
11	Buje NYL PTA RED 16MM SUP	3031838
12	PTA V C DER V14 G372 LED ABT MG	2074270
13	Bisagra MET INF DER AB RG34.5 SOLD	3057809
14	Bisagra MET SUP UNI ESC OPT	3023206
15	Bisagra Met INF IZQ AB RG34.5 SOLD	3057808



DIAGRAMA ELÉCTRICO
Explosionado Modelo G372
REV 00/18

